

**Touchscreen Monitor****Description:**

The Costar LCDCP4 is a rugged touchscreen monitor to control Costar Mobile Recorders. It can be mounted in the vehicle to monitor video or change recorder settings. The 7" screen provides 800x480 resolution and gives you easy access to the Mobile DVR operating menu. With a built-in RFID module, you can use it for operator log-in/log-out. It comes in an IP53-rated silicone enclosure to withstand the mobile environment.

**Features:**

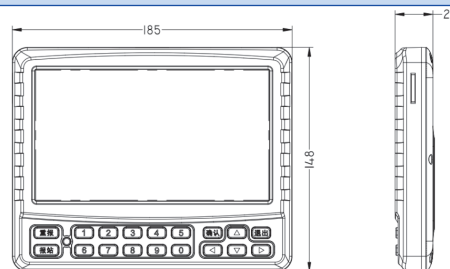
- 7 inch touch screen display
- Operates Costar MDVR on-screen commands
- Built-in speakers
- Built-in RFID module to sign in/out
- Resolution 800\*480
- Station announcement (Manually and automatically)
- 3 mounting options

# CMR-LCDCP4 Specifications

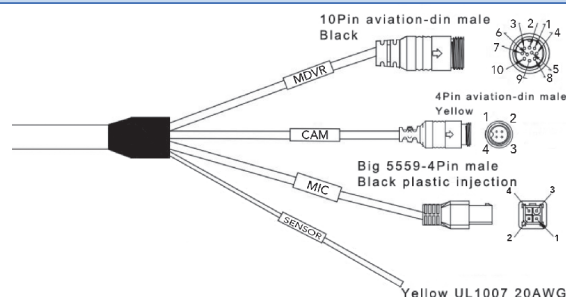
Model	Size	Resolution
CMR-LCDCP4	7 Inches (diagonal)	800*480

<b>Power</b>
<b>Operating Voltage:</b> 12V
<b>Operating Current:</b> 200mA
<b>Total Power Consumption:</b> 2.4W
<b>Specification</b>
<b>Screen Size:</b> 7 Inches (diagonal)
<b>Resolution:</b> 800*480
<b>Aspect ratio:</b> 16:9
<b>Button and Screen Distribution:</b> Combined
<b>Panel Material:</b> 70%PC+30%ABS Engineering plastics
<b>Button Material:</b> Silicone
<b>RFID Wipe Card Module:</b> 13.56 MHZ for driver to sign in and sign off.
<b>Speaker:</b> Speaker(16Ω, 2W)x2
<b>MDVR Interface:</b> Connects to Streamax MDVR
<b>CAM Interface:</b> Yellow 4PIN aviation-din connector, connects to reversing camera
<b>MIC Interface:</b> Connects to the driver megaphone
<b>SENSOR Interface:</b> Yellow hanging line, reversing signal detection port, high level effective. To monitor control for reversing.
<b>Function Buttons:</b> Restate / station announcer / Arrow Keys / Confirmation / Exit
<b>Number Buttons:</b> 0-9
<b>Tile Installation:</b> Refer to mounting bracket.
<b>Bracket Installation:</b> There are three brackets with hood.
<b>LCD Specification</b>
<b>Screen Type:</b> LCD screen
<b>Touch Type:</b> 4 wire resistor type
<b>Size:</b> 7 inch
<b>Resolution:</b> 800*480
<b>Luminance:</b> 400cd/m2
<b>Contrast Ratio:</b> 20.83402778, Under a suitable brightness condition, the higher contrast, the richer color levels
<b>Response Time:</b> 10/15(Tr/Td) ms, The response time of the LCD to the input signal
<b>Visual Angle:</b> 70/70/50/70 (Typ.)(CR dot 10) (Left/Right/Up/Down)
<b>Maximum Number of Display Color:</b> 262K/16.7M (6bit/6bit+Dithering)
<b>Scale:</b> 16:9
<b>Back-light Type:</b> White LED
<b>General Information</b>
<b>Operating Temperature:</b> -20°C ~+70°C
<b>Relative Humidity:</b> 8%~90%
<b>Waterproof and Dustproof:</b> IP53
<b>Dimensions:</b> 185mm×128mm×34.9mm

## Dimensions



## Pin Definition (unit: mm)



## Connector Name

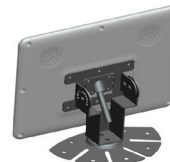
<b>MDVR:</b>	Black 10PIN aviation-din male connector connects to Costar MDVR.	
<b>CAM:</b>	Yellow 4PIN aviation-din connector connects to reversing camera.	
<b>MIC:</b>	Connects to driver microphone.	
<b>SENSOR:</b>	Yellow hanging line, reversing signal detection port, high level effective. For reversing control.	

## Bracket Installation

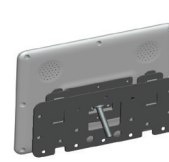
(LCDCP4 supports bracket installation, and there are three brackets to be chosen)



Suitable for relatively flat console



Suitable for curved console



Suitable for hanging

**COSTAR**  
MOBILE VIDEO